

7. HANG PIVOTING PANEL(S)

First, insert the bottom pin into the bottom pivot bracket. Push the top door plate onto the adjustable nut of the top pivot. To plumb the panels, loosen the set nut on the top pivot. Move the panel until plumb then tighten set nut. The bottom pivot is also adjustable as necessary.

8. HANG REMAINING PANELS

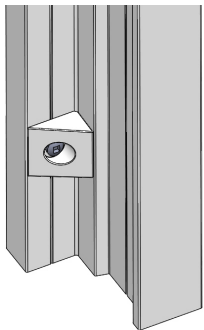
Hang the next panel by connecting the top door bracket to the wheel carrier. Then, align the hinges of the two panels and insert the hinge pins. Adjust the wheel carrier to level by using the enclosed wrench. Repeat this process for all remaining panels

9. SNUGGERS

The snuggers are used to provide tension on Bi-Folding panels, so that the panels remain in position when closed. Once the panels are fully installed, loosen the set screw of the snugger and position so that the wheel carrier will slightly press against the rubber bumper

10. BI-FOLD PANEL GUIDES

It will be necessary to apply bi-fold panel guides on all one-way close bi-fold track systems with side frames. The panel guides will be applied to the non-pivot side frame. Apply the first panel guide 2" up from the bottom of the frame. The second panel guide is located at the divider rail location or in the center of the side frame. A single #6 x 3/4" screw is used to attach the guides to the frame. The guide sits in the corner against the lightblock as shown below.



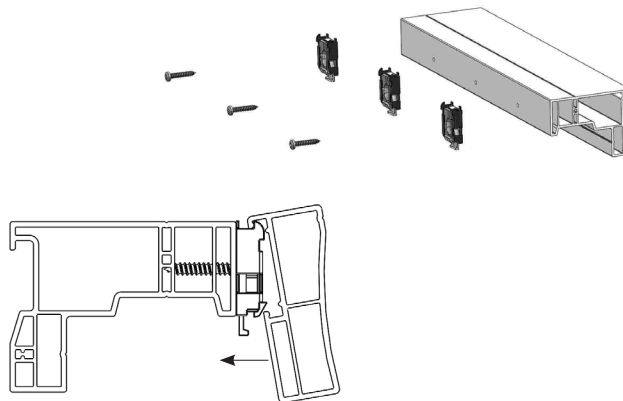
11. ATTACH VALANCE

Attach valance brackets to the front of the frame using the included #6 x 3/4" screws, the installation holes should be pre-drilled. Once all brackets are secure, position the channel on the back of the valance so that it rests on the bracket. The valance will need to be on a 45 degree angle, with the bottom of the valance farther into the room. Rotate the valance down to a vertical orientation until locked into all brackets

12. VALANCE RETURNS

Depending on application, there are two installation methods:

1. If the returns will contact or come too close to the wall, install front valance then attach returns.
2. If there is sufficient room, attach returns to front valance and install as an assembled unit. If the returns are longer than 2 3/4", then a frame corner key can be used to help locate the return. Glue the corner key into the return, then attach the return to the front valance. To attach, use Loctite 414 and apply a thin line of glue around the walls of the front valance. Position the return against the front valance and hold until dry. If the bottom of the valance with returns tilts upward, then add hinge shims behind each valance bracket. Loosen each bracket and position a shim behind the bracket, above the screw and re-tighten screw.

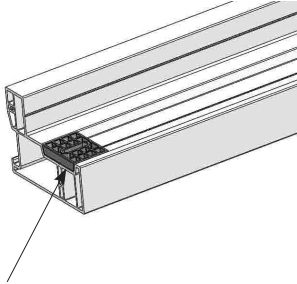


ECLIPSE[®]
SHUTTERS

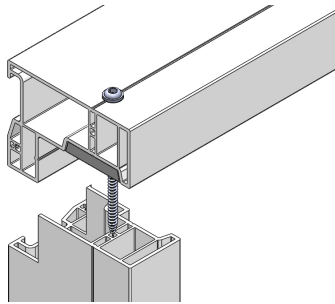
**BI-FOLD
INSTALLATION INSTRUCTIONS**

1. FRAME ASSEMBLY

If not already attached, glue track support spacers to the recessed channel at each end of the top frame. Insert the provided 3" screws through the pre-drilled assembly holes of the top frame. Line up the screw through the screw ports inside the side frames (fasten tightly).



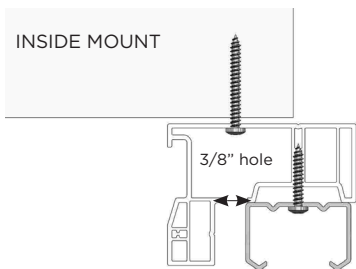
Track support spacer glued to each end of top frame



2. INSTALLATION HOLES

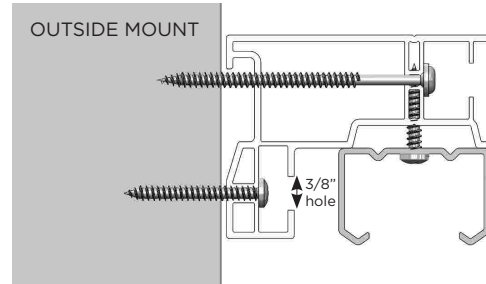
INSIDE MOUNT

- 1) The preferred method of installation is to remove every other screw from at least one track and set 3" screws through the track and frame into the opening. Determine if the frame will be recessed enough for this installation method.
- 2) If not, drill 3/8" holes through the first layer of Polyresin 3 on the underside of the frame near the rear track. Holes should be drilled every 10" starting at each end of the frame.



OUTSIDE MOUNT

1) If holes have not been pre-drilled, then drill 3/8" holes through the first layer of Polyresin 3 at the front edge of the reveal of the frame (or frame lightblock) every 10". 3/8" holes can also be drilled in the nose of the frame for additional support. This will require screws approximately 6"-8" in length



3. FRAME INSTALLATION

For an **inside** mount, the top frame will be fastened to the opening first and it must be level. Remove every other track screw and replace it with a 3" screw to fasten the frame to the opening. Use shims between the top frame and the opening to level if necessary.

For an **outside** mount, set the frame against the wall. Level the top frame and fasten to the wall with the provided installation screws. For additional strength, drill 3/8" holes into the front of the frame and set an 6" or longer screw (not provided) through the front of the frame into the opening. Plumb the side frames and fasten with the screws provided.

4. INSERT AND ATTACH TRACK COMPONENTS

A) One Way Stacking Bi-Folds

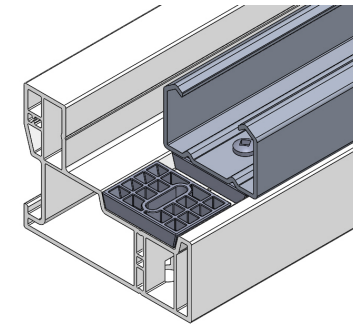
Determine pivot or stacking side. Install Top Pivot at that end of the track. Tighten to the point it will not fall out of the track, then insert all carriers. Insert snugger with the bumper towards the center of the track. Tighten to the point it will not fall out of the track.

B) Center Close

Install Top Pivot at the left end of the track. Tighten to the point it will not fall out of the track. Insert half of the carriers, then insert two snuggers back to back. Tighten to the point they will not fall out of the track. Insert the remaining carriers and the Top Pivot at the right end of the track and tighten to the point it will not fall out of the track.

5. ALUMINUM TRACK

Mount the track with all components installed by placing the track in the recessed channel of the frame and attach provided installation screws. For inside mounts, leave out every other track screw. Installation screws will be set through the track, and through the frame into the opening.



Rotate track onto frame & attach screws

6. MOUNT THE BOTTOM PIVOT

Mount the bottom pivot to the side frame, tight to the floor. The center of the pivot bracket should be in line with indicator line on side frame and the top pivot. Attach to the floor if possible.