

7. HANG PANELS

Push the door brackets onto the adjustable nut of the wheel carriers. Lock the panels in place by rotating the plastic slide around the neck of the wheel carrier adjustable nut. To level the panels, turn the adjustable nut of the wheel carrier with the provided wrench tool.

8. ATTACH DOUBLE PANELS IF APPLICABLE

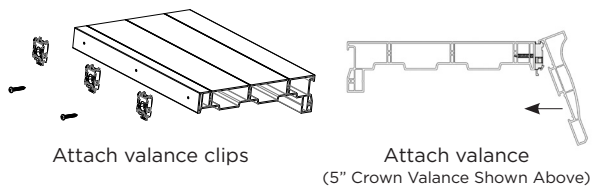
When two panels are to be joined together, they are connected using hinges. Push the panels together and make sure the hinges align (adjust panels heights as needed). Open louvers and reach through to set hinge pins to connect panels or open the door and insert the hinge pins from the back side of the panels.

9. SECURE SIDE FRAMES IF APPLICABLE

Mount each side frame with the mounting screws provided so the frames are plumb to the hanging panel. Cover all 3/8" holes with the button plugs.

10. ATTACH VALANCE IF APPLICABLE

Attach valance brackets to the front of the frame using the included #6 x 3/4" screws, the installation holes should be pre-drilled. Once all brackets are secure, position the channel on the back of the valance so that it rests on the bracket. The valance will need to be on a 45° angle, with the bottom of the valance farther into the room. Rotate the valance down to a vertical orientation until locked into all brackets.



11. VALANCE RETURNS

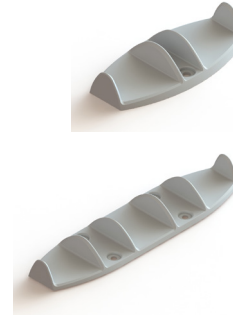
Depending on application, there are two installation methods.

1. If the returns will contact or come too close to the wall, install front valance then attach returns.

2. If there is sufficient room, attach returns to front valance and install as an assembled unit.
3. If the returns are longer than 2 3/4", then a frame corner key can be used to help locate the return. Glue the corner key into the return, then attach the return to the front valance. To attach, use Loctite 414 and apply a thin line of glue around walls of the front valance. Position the return against the front valance and hold until dry.

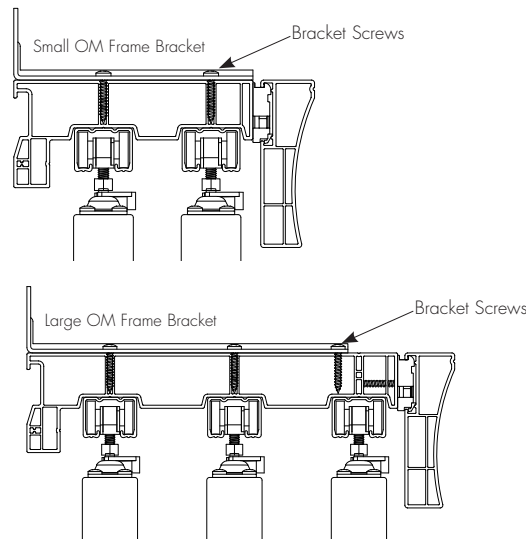
12. OPTIONAL FLOOR GUIDE(S)

Install floor guide(s) in-between each set of moving panels. The guides prevent the doors from swinging forward into the room or back into the opening. Two sizes (small and large) are available depending on type of by-pass.



13. OUTSIDE MOUNT SUPPORT BRACKET (OPTIONAL)

Frame support brackets should be mounted to the top of the frame using #8 x 1" screws. Set the screws so they pass through the holes of the bracket and into the indicator line(s) that runs the width of the frame. #8 x 2" screws or longer should be used to attach the bracket to the wall. The bracket(s) should be centered or evenly spaced (16" -24" apart) near the middle of the top frame. The brackets should be secured to the wall studs or to the door header above the opening.



ECLIPSE[®]
SHUTTERS

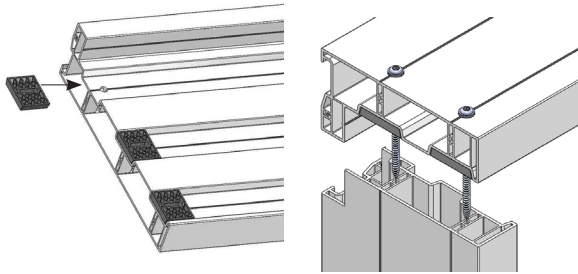
**BY-PASS
INSTALLATION INSTRUCTIONS**

1. FRAME ASSEMBLY

If not already attached, glue track support spacers to the recessed channel at each end of the top frame.

Insert the provided 3" screws through the pre-drilled assembly holes of the top frame.

Line up the screw through the screw ports inside the side frames (fasten tightly).



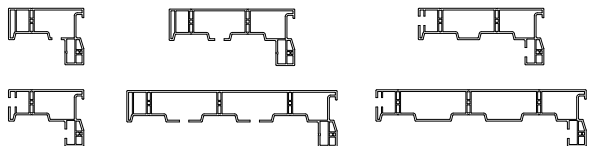
2. INSTALLATION HOLES

For an inside mount

1. The preferred method of installation is to remove every other screw from at least one track and set 3" screws through the track and frame into the opening. Determine if the frame will be recessed enough for this installation method.
2. If not, drill 3/8" holes through the first layer of Polyresin 3 on the underside of the frame near the rear track. Holes should be drilled every 10" starting at each end of the frame.

For an outside mount

1. If holes have not been pre-drilled, then drill 3/8" holes through the first layer of Polyresin 3 at the front edge of the reveal of the frame (or frame lightblock) every 10"
2. 3/8" holes can also be drilled in the nose of the frame for additional support. This will require screws approximately 6"-8" in length.

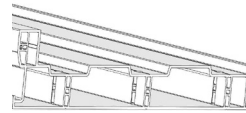
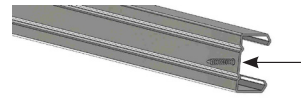


3. WHEEL CARRIERS

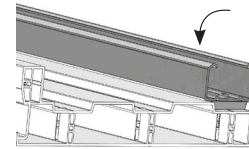
Insert wheel carriers into each aluminum track. Two carriers are assigned to each panel, so check the panel configuration to determine the correct number of carriers in each track.

4. ALUMINUM TRACKS

Mount aluminum tracks to the extreme left in the opening of the frame by screwing through the pre-drilled holes in the track to the extrusion indicator lines on the underside of the top frame. The 1 1/4" track will nest into the recessed grooves of the frame.



Set screw through track



Rotate track on frame & attach screws

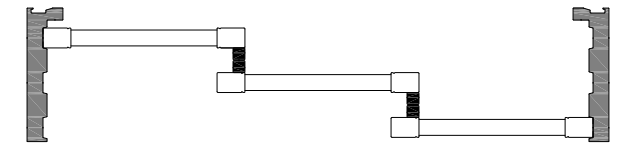
5. FRAME INSTALLATION

For an inside mount, the top frame will be fastened to the opening first and it must be level. Use shims between the top frame and the opening to level if necessary. Remove every other track screw and replace it with a 3" screw to fasten the frame to the opening.

For an outside mount, set the frame against the wall. Level the top and fasten the top frame to the wall with the provided installation screws. For additional strength, drill 3/8" holes into the front of the frame and set an 8" or longer screw (not provided) through the front of the frame into the opening.

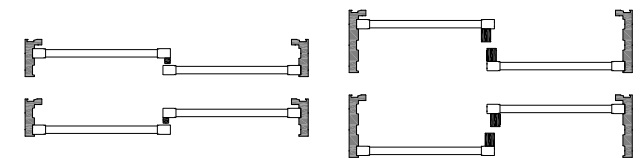
6. ATTACH OPTIONAL LIGHT BLOCK BETWEEN PANELS

For Standard By-Pass and Triple By-Pass, an optional 3/4" x 3/4" mounting strip is mounted at the back of the interior edge of each front panel. If requested, Open By-Pass requires (2) pieces of vertical jamb. One piece of vertical jamb is mounted at the back of the interior edge of the front panel, while the second piece is mounted at the front interior edge of the rear panel. For either option, drill a 3/8" hole starting at the top, every 20" through the first two layers of the profile. Screw the mounting strip or the vertical jamb to the panel and cap holes with button plugs. Note: Mounting strips and vertical jambs are 1" shorter than the panels so that there is no interference with the floor guides. Note: For Open By-Pass shutters, only a gap of 7/8" will remain once mounting strips have been installed.



Top view - assembly of light block between Triple By-Pass panels

1. Orient vertical jamb as shown (left)
2. Drill 3/8" holes every 20" from the top through the first two layers
3. Set #8 x 1" By-Pass screws
4. Cap holes with button



Top view - assembly of light block between Open By-Pass panels

1. Orient vertical jamb as shown (left)
2. Drill 3/8" holes every 20" from the top through the first two layers
3. Set #8 x 1" By-Pass screws
4. Cap holes with button