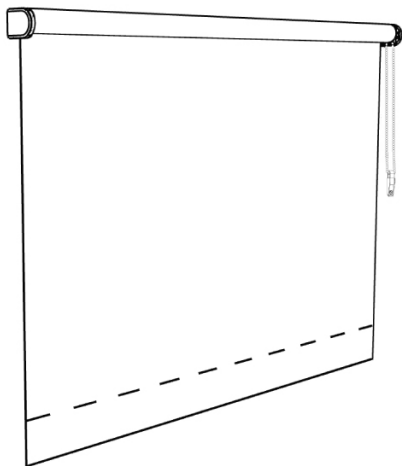


INSTALLATION INSTRUCTIONS

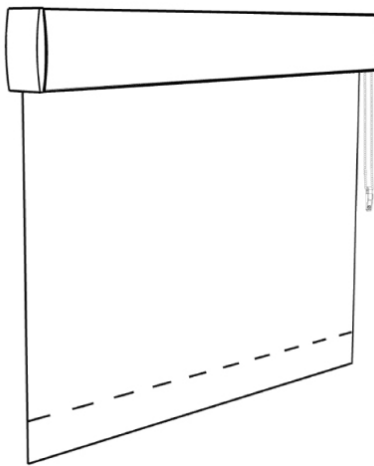
ROLLER BASICS

Clutch Operated Shades

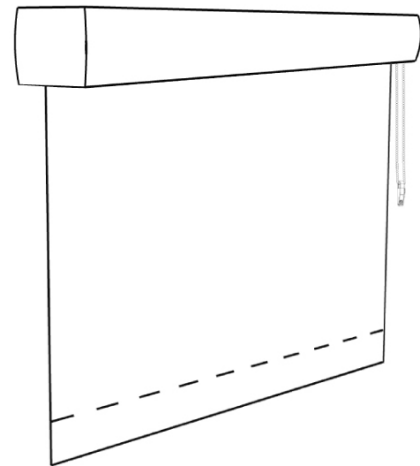
Open Roll



Deco Fascia

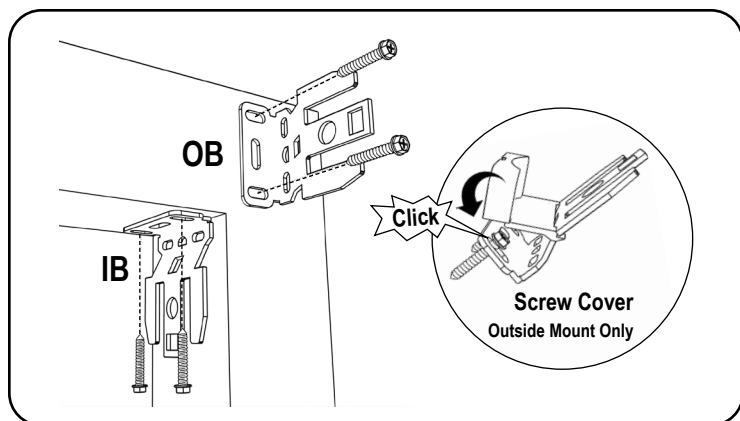


Contoured Valance



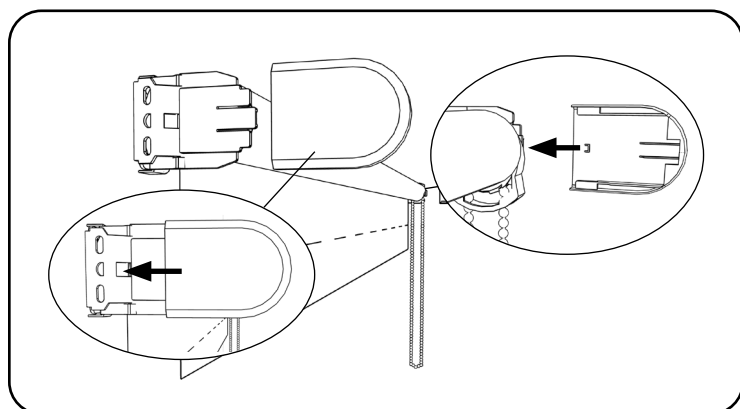
Clutch Operated with Open Roll

1. Install the Brackets

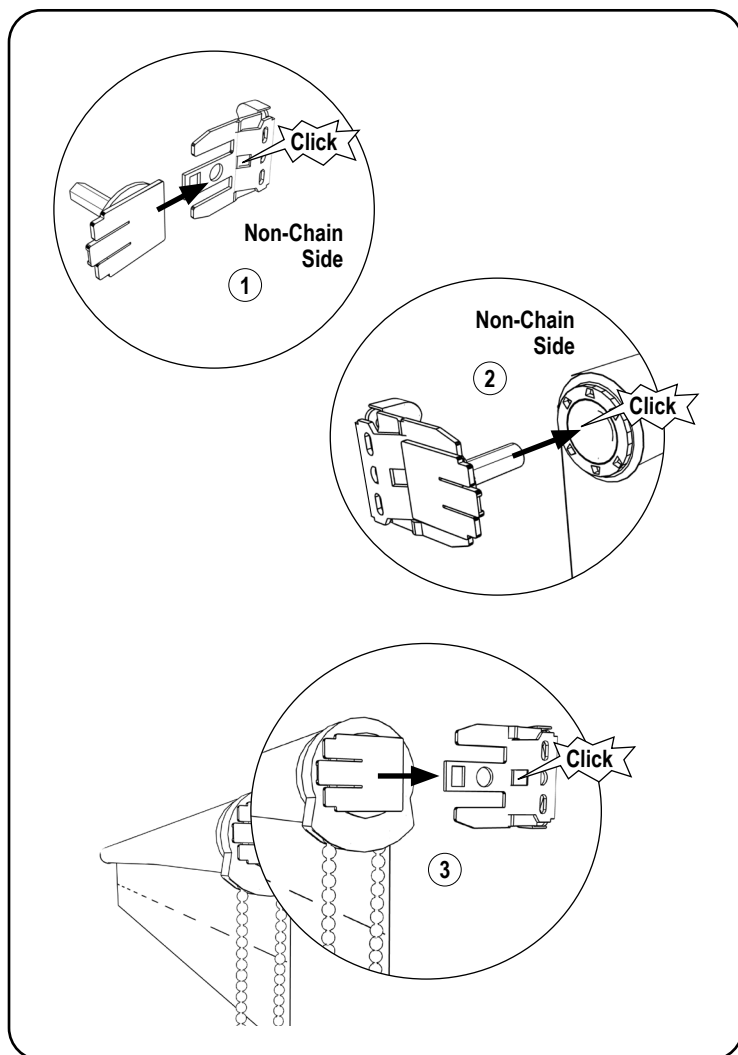


Secure the roller shade installation brackets with the supplied screws.
If shade was ordered as outside mount (OB), attach the supplied screw covers on to the bracket for a finished look.

3. Install the Bracket Covers



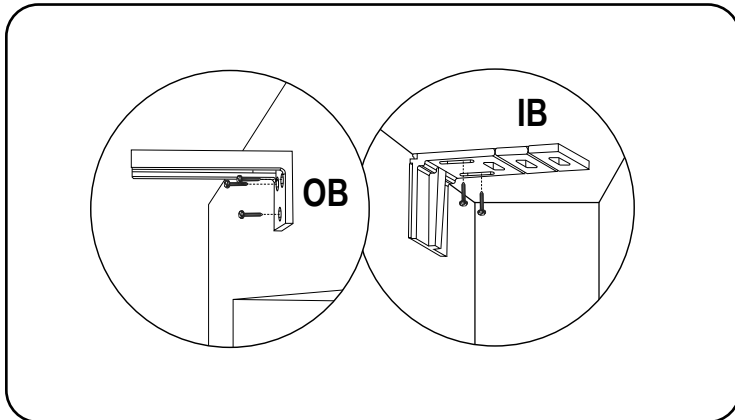
2. Install the Shade



INSTALLATION INSTRUCTIONS

Clutch Operated with Deco Fascia

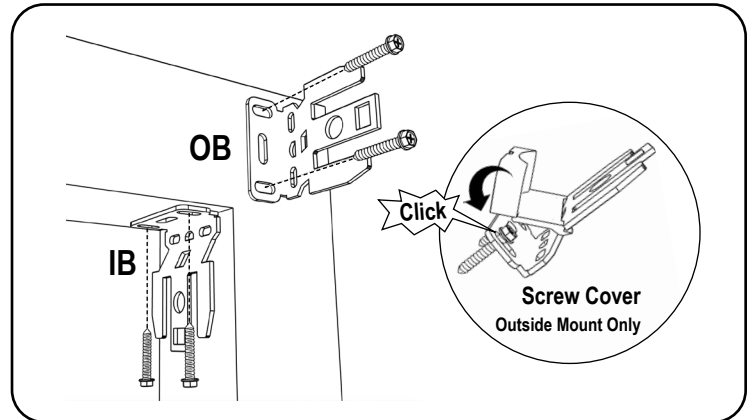
1. Install the Fascia Brackets



Outside mount (OB) requires a T-Bracket installation. Space brackets evenly.

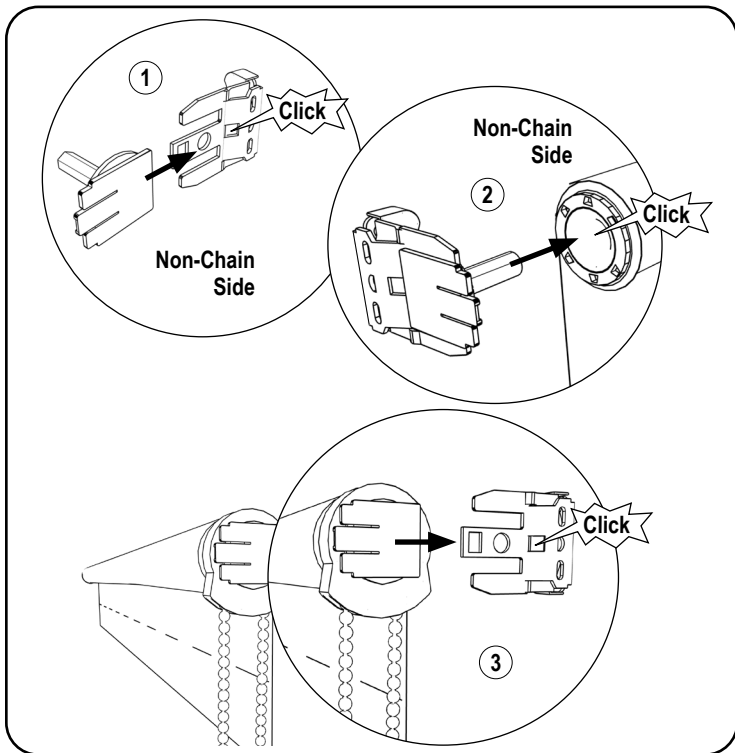
Note: Do not attach the Deco Fascia until the shade has been installed.

2. Install the Brackets

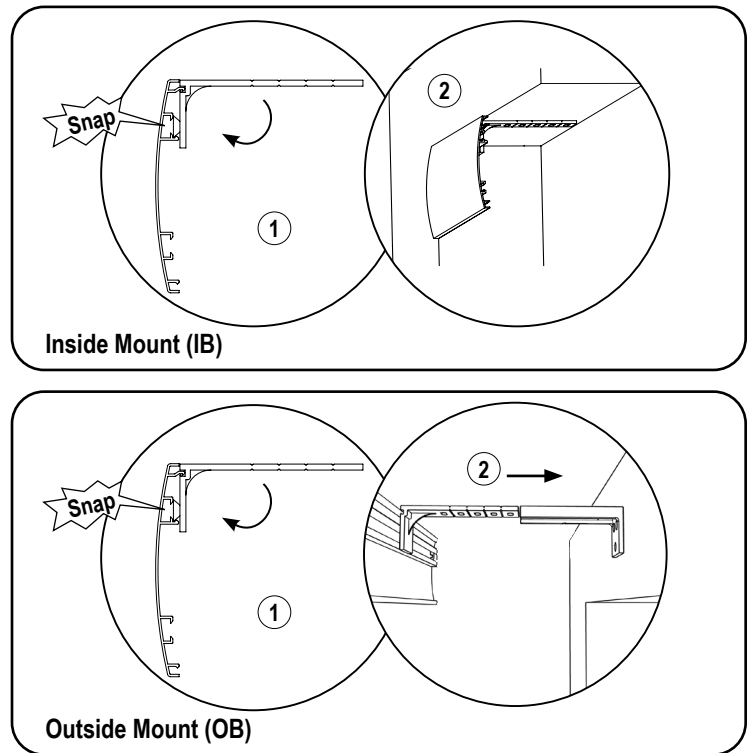


Secure the roller shade installation brackets with the supplied screws. If shade was ordered as outside mount (OB), attach the supplied screw covers on to the bracket for a finished look.

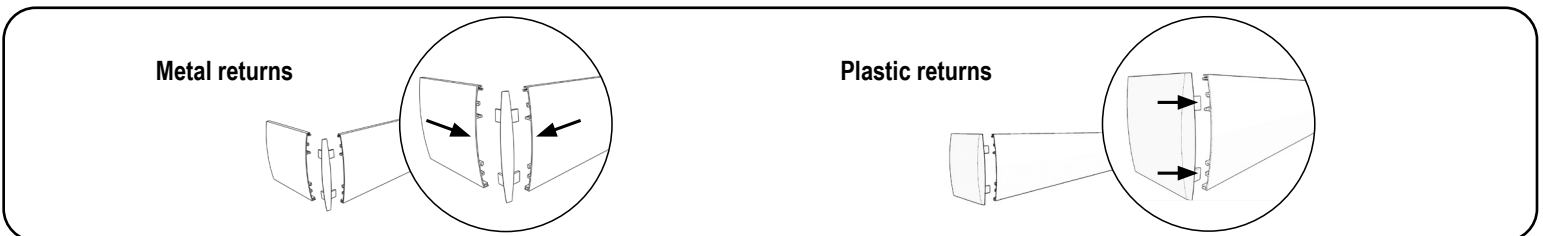
3. Install the Shade



4. Install the Deco Fascia



5. Install the Returns (Optional)

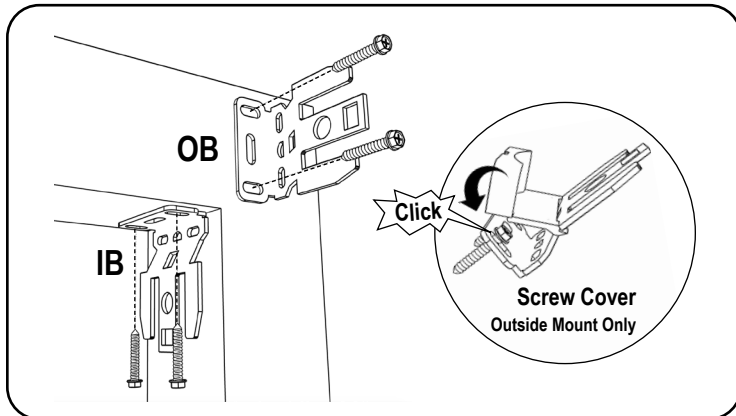


Metal returns (Outside mount only) include a plastic corner connector. **Plastic returns** (Inside mount with Outside Mounted fascia) snap on the end of the fascia.

INSTALLATION INSTRUCTIONS

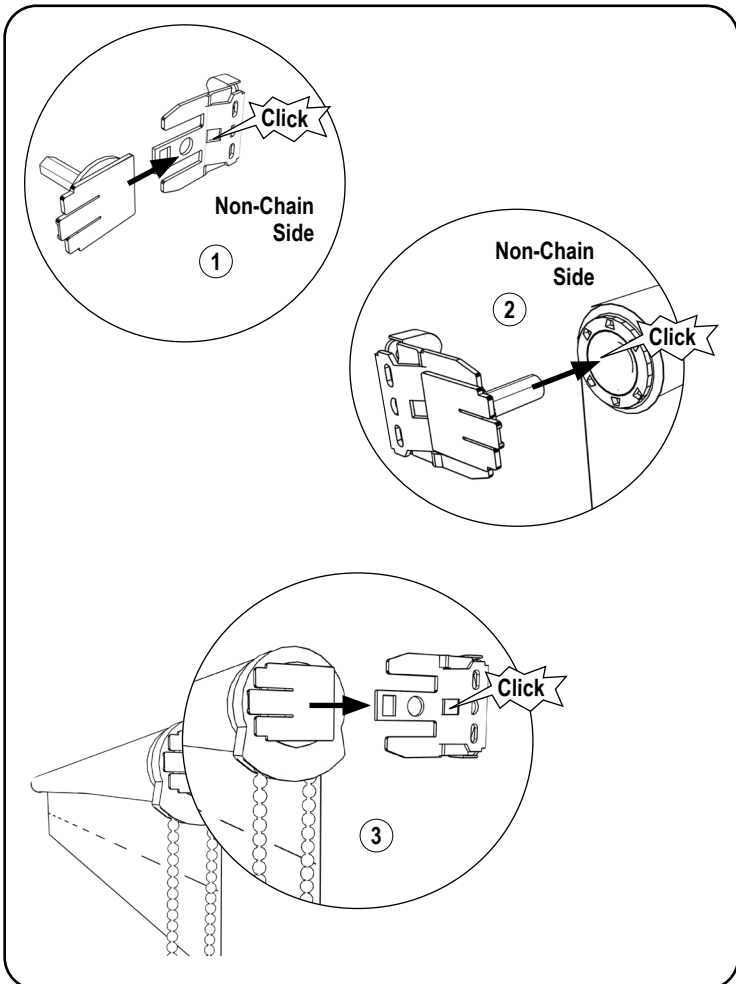
Clutch Operated with Contoured Valance

1. Install the Brackets



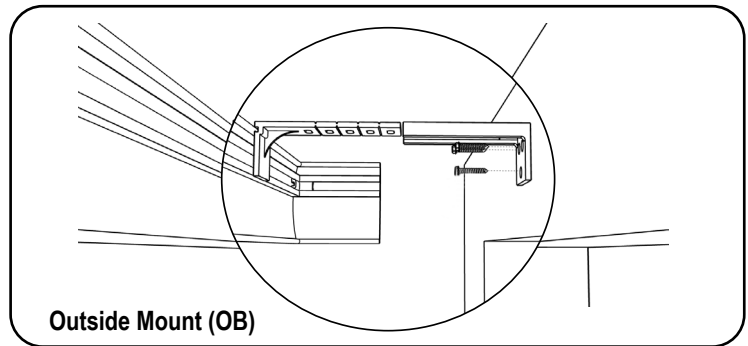
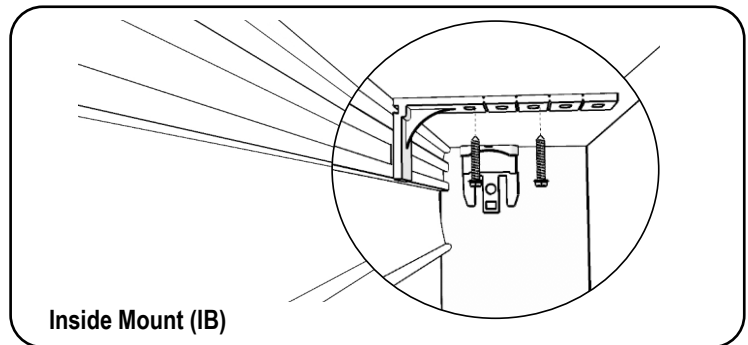
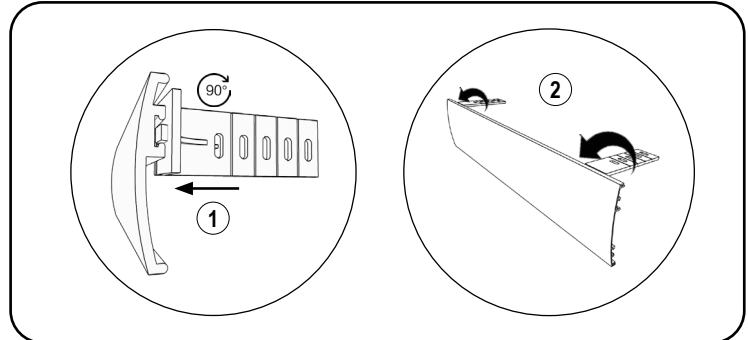
Secure the roller shade installation brackets with the supplied screws. If shade was ordered as outside mount (OB), attach the supplied screw covers on to the bracket for a finished look.

3. Install the Shade

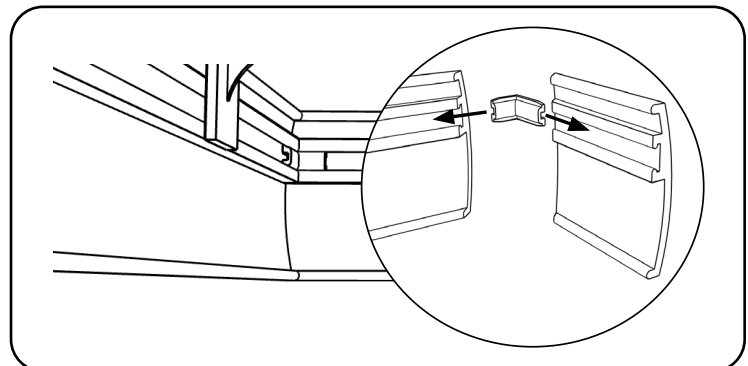


2. Install the Valance Brackets

Note: Prior to installing the installation brackets to the wall, insert the valance onto each installation bracket.

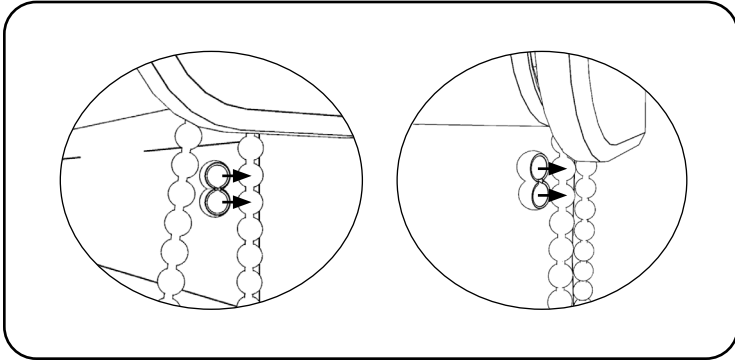


4. Install the Return (Outside Mount Only - Optional)



INSTALLATION INSTRUCTIONS

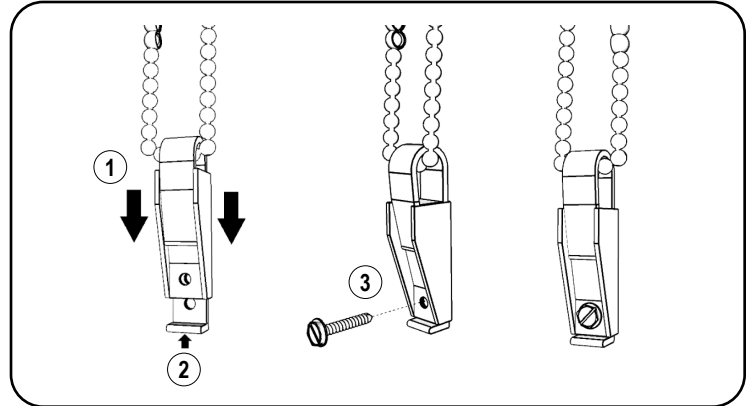
Set the Limits



Upper Limit, pull the back chain until the desired upper position. Then, snap the chain stop to the bead just below the clutch.

Lower Limit, pull the front chain until the desired lower position. Then, snap the chain stop to the bead just below the clutch.

Install the Safety Tension Device



Slide device down to the bottom of the bead chain and pull down until the chain is taut on both sides. Mark the screw hole and install the device with the screws provided.

Child Safety

Young children can **STRANGLE** in cord loops and in the loop above the cord stop. They can also wrap cords around their necks and **STRANGLE**.

- Always keep cords out of children's reach.
- Move cribs, playpens and other furniture away from cords.
Children can climb furniture to get to cords.
- Do not tie cords together.
- Make sure cords do not twist together and create a loop.

WARNING/ADVERTENCIA	
5.1.3	Rev. 5/18 Print 5/18
	Window Blind Cord Can STRANGLE Your Child. To prevent strangulation, purchase cordless products or products with inaccessible cords.
	La cuerda de la persiana puede ESTRANGULAR a su niño. Para evitar el estrangulamiento, compre alternativas cuerda o productos con cuerdas inaccesibles.

Beaded Cord Loop Shades

- Attach the tensioner to the wall or window casement. See Install the Safety Tension Device. This can prevent children from pulling cord loops around their necks.
- A tensioner installation kit with instructions for attaching the tensioner is provided. For the shade to operate properly, the tensioner must be correctly mounted and secured. See tensioner instructions provided for details.
- Only the supplied tensioner(s) and hardware should be used.

