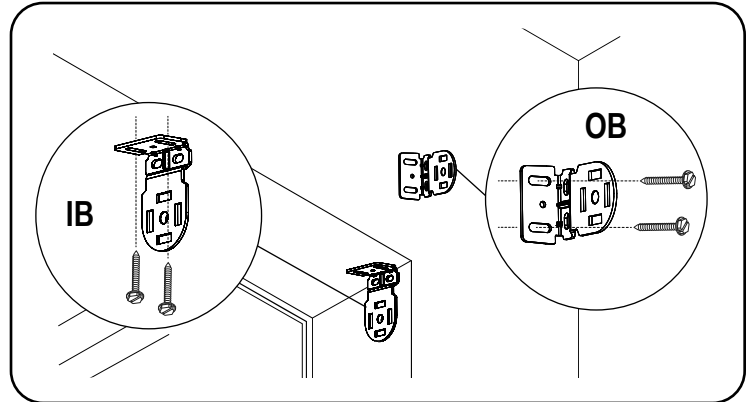
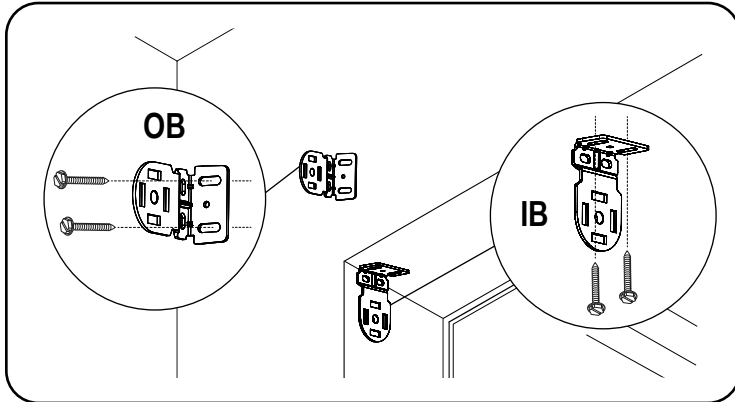


1. Install the Brackets

Important: Make sure the mounting surface is level. Brackets must be in line and level for shade to operate properly. Shim brackets if necessary.

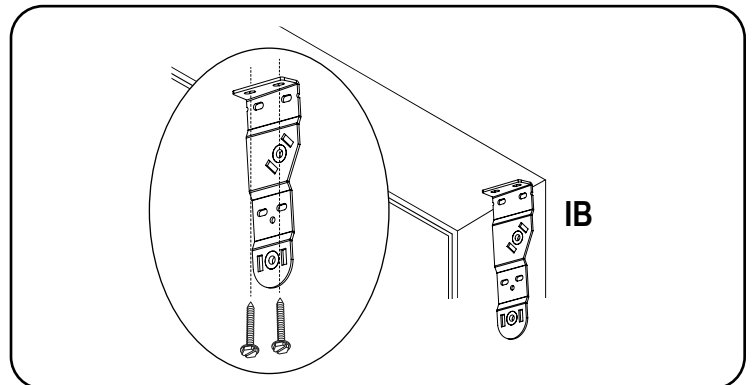
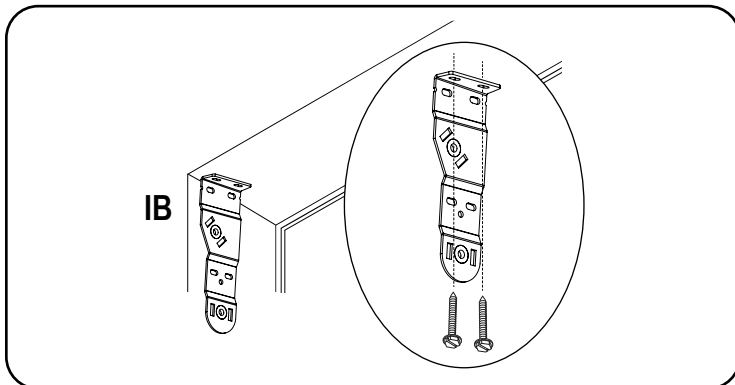
1a. Open Roll Tubes 1 1/8" to 2 1/2"



Inside Mount (IB), Install each bracket with two screws either through the side or up through the top. Make sure all brackets are leveled and aligned.

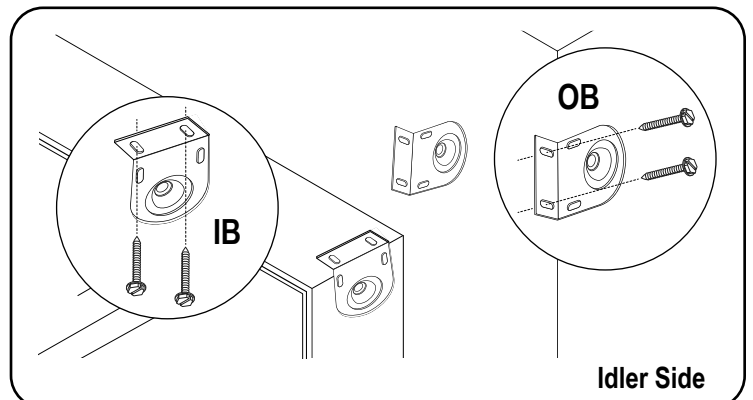
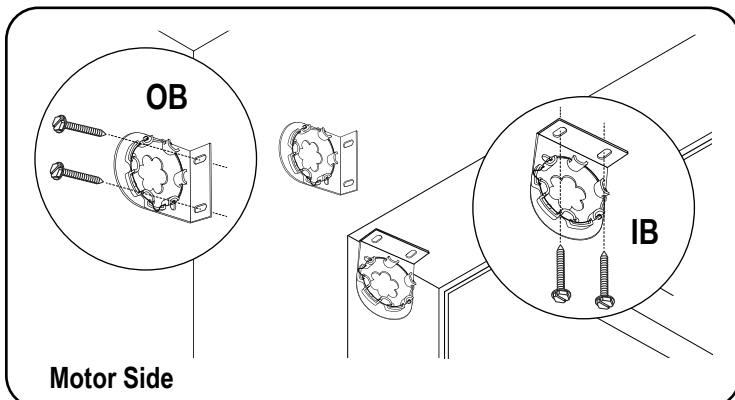
Outside Mount (OB), Secure each bracket with two screws. Make sure all brackets are level. Minimum 1 3/4" mounting surface height requirement.

1b. Double Brackets (Only Tubes 1 1/8" to 1 1/2")



Inside Mount Only (IB), Install each bracket with two screws through the top. Make sure brackets are leveled and aligned. Minimum 1 3/4" mounting depth requirement. 2 1/8" to 4" flush mount depth requirement (depends on roll diameter).

1c. Open Roll Tubes 3 1/4" and Hardwired Motorization



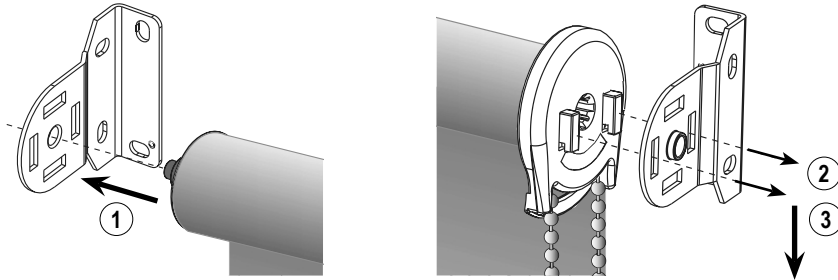
Inside Mount (IB), Install the brackets level and aligned to each other, using the screws provided. Minimum 3" mounting depth requirement. 2 1/8" to 4" flush mount depth requirement (depends on roll diameter).

Outside Mount (OB), Secure each bracket with two screws. Make sure all brackets are level. Minimum 3" mounting surface height requirement.

INSTALLATION INSTRUCTIONS

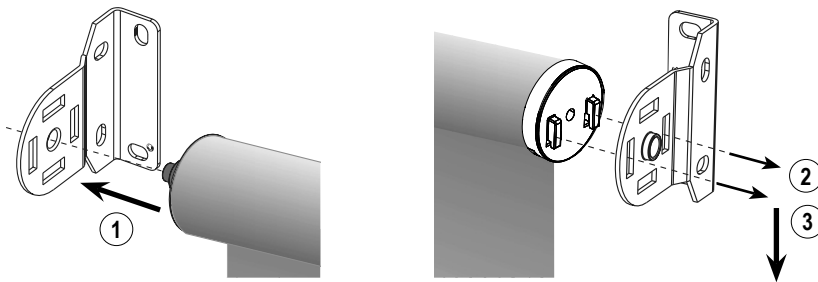
2. Install the Shade

2a. Skyline Clutch



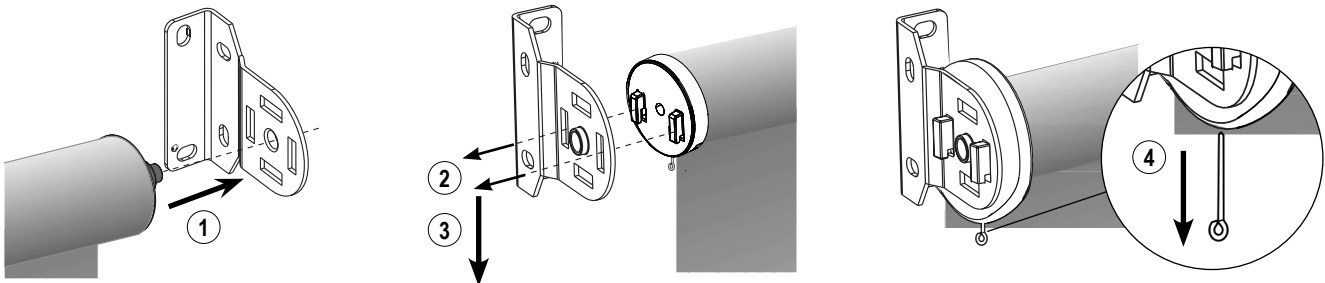
First, place the spring loaded pin end into the round hole of the bracket. Then, keeping the pin end secure in its bracket, insert the hooks on the clutch straight into the two slots in the bracket. Once the two hooks are through the slots, gently pull downward on the side with hooks until the hooks have locked securely to the bracket. The bottom of the clutch should point straight down.

2b. Motorization (Open Roll Tubes 1 1/2" to 2 1/2")



First, place the spring loaded pin end into the round hole of the bracket. Then, keeping the pin end secure in its bracket, insert the hooks on the motor head straight into the two slots in the bracket. Once the two hooks are through the slots, gently pull downward on the motor until the hooks have locked securely to the bracket. The reset button of the motor should be facing down.

2c. AgileLift



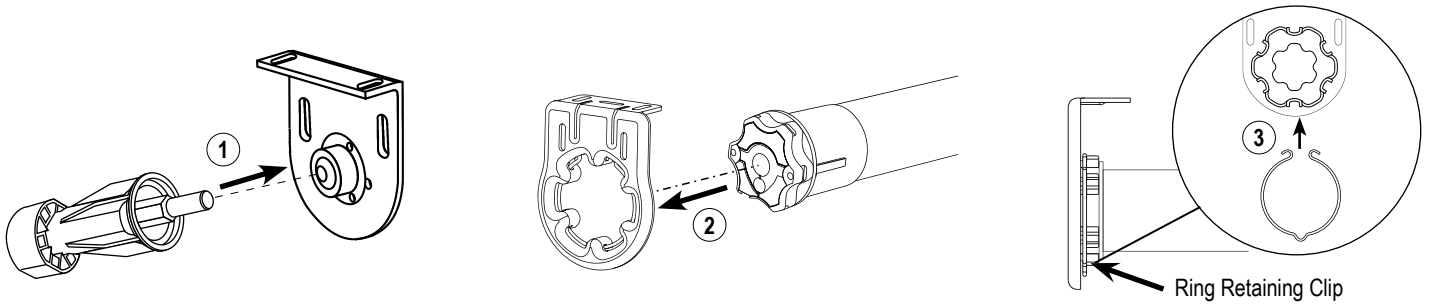
Important: Do not to pull the lock pin until shade is securely assembled onto the brackets.

First, place the spring loaded pin end into the round hole of the bracket. Then, keeping the spring loaded pin end secure in its bracket, insert the hooks on the control head straight into the two slots in the bracket. Once the two hooks are through the slots, gently pull downward on the side with two hooks until the hooks have locked securely to the bracket. **Lastly, remove the lock pin** prior to operation by pulling it down.

Note: If for any reason needs to make an adjustment on the position of the installation brackets or need to remove the shade; raise the shade and **insert the lock pin prior to disengaging the shade** from the installation brackets.

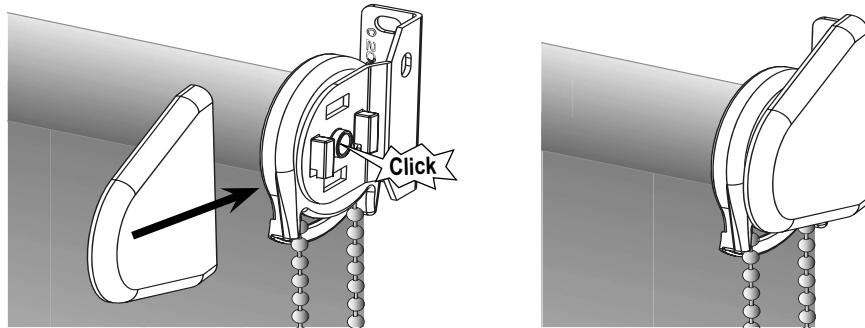
INSTALLATION INSTRUCTIONS

2d. Open Roll Tubes 3 1/4" and Hardwired Motorization

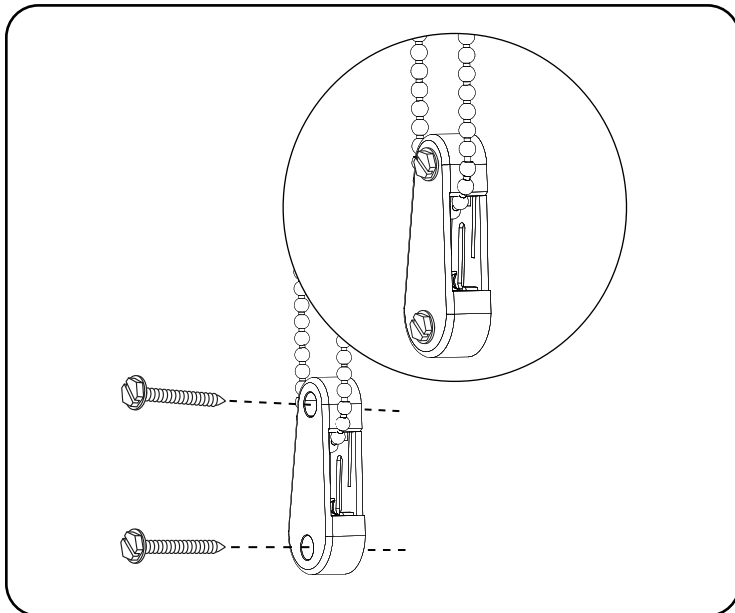


First, rotate the roll to ensure reset button of the motor is facing down. Place the spring loaded pin end into the round hole of the Idler bracket. Then, keeping the pin end secure in its bracket, align and insert the motor head into the slots in the motor bracket. Lastly, once the motor is complete security into the motor bracket, snap the ring retaining clip in place, locking the motor in position.

3. Install the End Caps (Open Roll Tubes 1 1/8" to 2 1/2")

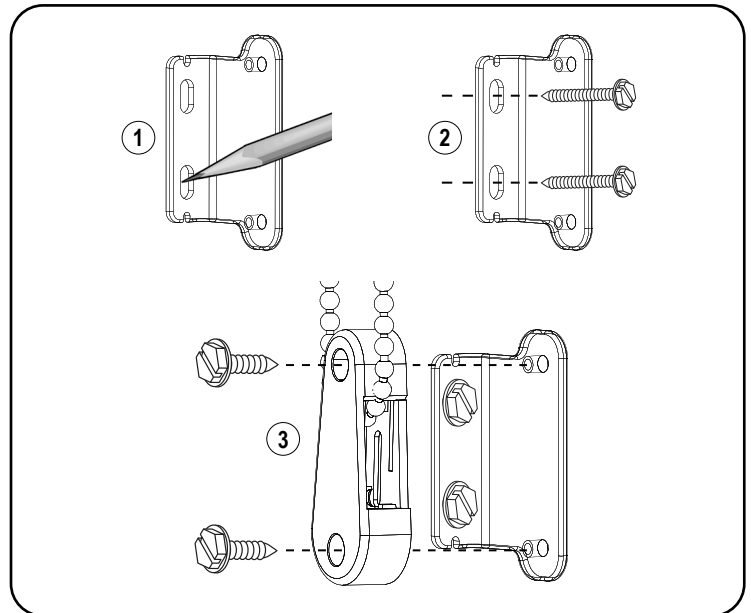


4. Installing the Beaded Cord Tensioner



Inside mount (IB)

Pull tension device down until the chain is taut and then move the tension device up approximately 1/8". Mark the upper and lower screw hole and install the device with the screws provided. **Important:** Do Not Over-Tighten.



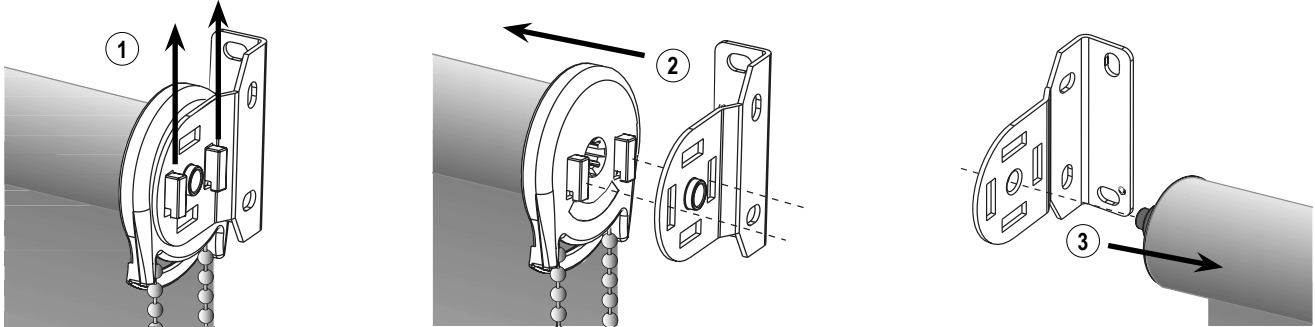
Outside mount (OB)

INSTALLATION INSTRUCTIONS

5. Adding Optional Top Treatment

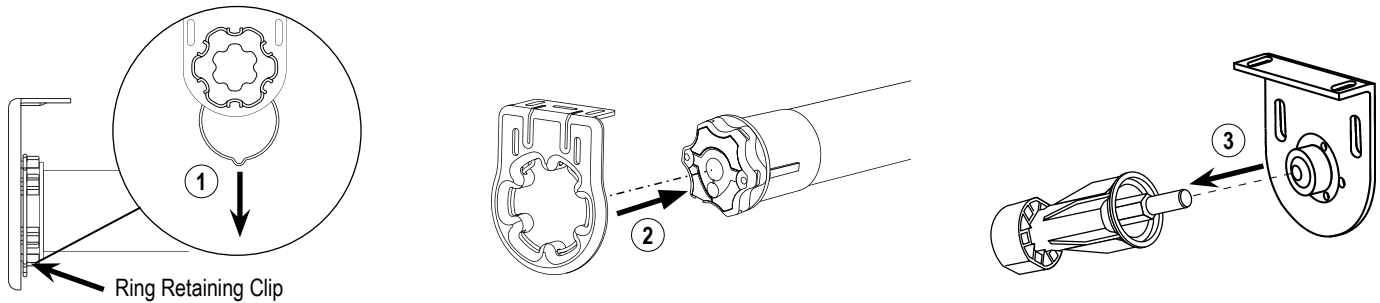
Please refer to *Roller Shades - Skyline Fabric Cornice and Deluxe Valance installation instructions*.

6. Removing the Shade (Only if Necessary — Open Roll Tubes 1 1/8" to 2 1/2")



First, raise the shade. Gently lift up the control unit (hooks end) to disengage, until the hooks touch the top part of the bracket slot. Then, slide the roll towards the spring loaded pin end until the hooks are completely out of the bracket slots. Lastly, remove the spring loaded pin end from the Idler bracket.

7. Removing the Shade (Only if Necessary — Open Roll Tubes 3 1/4" and Hardwired Motorization)



First, raise the shade. Remove the ring retaining clip in place from the motor. Then, slide the roll towards the spring loaded pin end until the motor head is completely out of the motor head slots. Lastly, remove the spring loaded pin end from the Idler bracket.

Child Safety

Young children can **STRANGLE** in cord loops and in the loop above the cord stop. They can also wrap cords around their necks and **STRANGLE**.

- Always keep cords out of children's reach.
- Move cribs, playpens and other furniture away from cords.
Children can climb furniture to get to cords.
- Do not tie cords together.
- Make sure cords do not twist together and create a loop.

⚠ WARNING/ADVERTENCIA	
5.1.3	Rev. 5/18 Print 5/18
	Window Blind Cord Can STRANGLE Your Child. To prevent strangulation, purchase cordless products or products with inaccessible cords. La cuerda de la persiana puede ESTRANGULAR a su niño. Para evitar el estrangulamiento, compre alternativas cuerda o productos con cuerdas inaccesibles.

